

**MAKE A DATE  
WITH LEICESTER**

## Tourism Guide

**Leicester**  
visitleicester.info





# Contents

Make a Date with Leicester	<b>4</b>	Café Culture	<b>41</b>
Introducing Leicester: From Glorious Past to Golden Future	<b>7</b>	Live Entertainment	<b>46</b>
10 Things I Love About Leicester	<b>10</b>	Activities	<b>48</b>
Heritage and Attractions in Leicester	<b>14</b>	Pubs	<b>52</b>
The Story of King Richard III and Leicester	<b>20</b>	Sports Clubs	<b>54</b>
Uncover the Story of Leicester's Hidden Heritage	<b>26</b>	Green Spaces	<b>56</b>
Festivals	<b>30</b>	Restaurants	<b>58</b>
Shopping	<b>32</b>	Bars and Clubs	<b>64</b>
Theatre & Cinema	<b>38</b>	Accommodation	<b>68</b>
		Travel	<b>72</b>
		Map of Leicester	<b>78</b>

MAKE A DATE  
WITH LEICESTER



# Make a Date with Leicester

## Planning your time in Leicester and wondering where to start?

This Tourism Guide gives a great overview, and you can pick up free copies of our in-depth city guides to plan the details of your perfect escape in Leicester. Find information on a range of venues waiting to be discovered, alongside directory listings of all the need-to-know info to plan your trip.

**Grab hold of your diary... it's time to make  
a date with Leicester!**



### Leisure & Culture Guide



### Beauty & Wellness Guide



### Café Guide



### Hotel Guide



### Bar, Pub & Club Guide



### Restaurant Guide



### Retail Guide



### Heritage Panel Guide



Pick up your free copies from the Visit Leicester Information Centre inside the King Richard III Visitor Centre at 4A St Martins, Leicester, LE1 5DB

Ask one of our friendly advisors to help you plan your visit or call +44 (0)116 299 4444

Alternatively, you can download your copy from [visitleicester.info](http://visitleicester.info)





# Introducing Leicester: From Glorious Past to Golden Future

The story of Leicester is an epic one and if walls could talk, our city's historic buildings would tell some fascinating stories

Uncover the Story of travel pioneer Thomas Cook and his elegant coffee houses; Richard III writing letters at Leicester Castle; Alice Hawkins and suffragette lock-ins; and the arrival of Buffalo Bill's Wild West Show at the railway station. Stories of a Civil War bombardment of the Magazine in the 17th century, visits by William Morris and George Bernard Shaw to the Secular Society, and Ramsay MacDonald MP addressing crowds from the steps of the Corn Exchange.

Over two millennia, established communities and new arrivals have all helped to weave the rich historical tapestry of the city. Leicester's Old Town — once the centre of the gated medieval city and the final resting place of King Richard III — is a treasure trove of historical sites waiting to be discovered, but there are plenty of historic landmarks, buildings and stories to be found, sometimes in the most unlikely places.

Exploring our heritage panel trail is a great way to delve into the story of Leicester, providing residents and visitors with helpful information, and giving a clearer appreciation of buildings, people and locations that represent important points in the Story of Leicester. Discover a restaurant in one of the oldest schoolhouses in England, a Clock Tower that is thought to have been the first traffic island in Britain, and a row of terraces covered in images of Leicester's first private detective.

From boards trodden by Shakespeare to shopping centres on the site of Roman marketplaces, stages graced by The Beatles and Buzz Aldrin's underpants, history and heritage are at the very heart of Leicester.

Today, the regenerated city centre and surrounding neighbourhoods offer a vibrant and thriving metropolis with everything from fine art to fine dining, world class theatre to elite sport and experiences from as far afield as the Indian subcontinent and outer space.

Leicester's lively music and sports scenes are creating history of their own.

Leicester has a long tradition of supporting the best of the UK's breakthrough music talent, including rising local stars like Easy Life and Mahalia, who are setting the music industry alight after honing their craft in the city.





Sports fans will be spoilt for choice; the city is proud of its prestigious and enviable sporting history. The football club, famous 5000-1 winners of the Premier League in 2016, has been home to many of the sport's greats such as local hero Gary Lineker and England legend Gordon Banks. The formidable Leicester Tigers are the best supported and most successful club in English rugby, and the city is also home to Leicester Riders, the oldest professional club in British Basketball and founder members of the British Basketball League. Leicester Ladies Hockey Club, established in 1894, are one of the oldest and most successful clubs in English Hockey.

And it's not just the sporting theatres that are grabbing the headlines in this city. The ground-breaking architectural masterpiece Curve Theatre has developed a reputation for producing, programming and touring a bold and diverse programme of musicals, plays, new work, dance and opera, alongside a dynamic mix of community engagement, artist development and learning programmes.

Be transported to another world at The National Space Centre. The striking rocket tower, interactive galleries and the UK's largest planetarium will satiate even the most imaginative interstellar curiosities.

Or discover the spectacular style of the Golden Mile – an area that will transport visitors to an exotic world of spices, Indian jewellery, clothing, interesting gifts and fantastic food and drink. It is one of a number of charming and historic neighbourhoods that surround the city centre, each with hidden gems waiting to be discovered.

The heart of the city is Leicester's shopping core. From the 700-year-old market to the independent boutiques, arcades and eateries of The Old Town and the multitude of stores and restaurants in the Highcross and Haymarket shopping centres, Leicester's sterling retail offer spreads out in all directions from the landmark 150-year-old Clock Tower.

Perhaps the most recognisable of Leicester's landmarks, the Clock Tower was built in 1868 as a lasting memorial to four of the city's famous benefactors. Although not at the geographical centre, the monument has long been a focal point for the people of Leicester – utter the phrase "meet me at the Clock Tower," and you'll be considered a local.

In the heart of the country, this dynamic city offers both historical charm and futuristic experiences, as well as being cultured, cosmopolitan and – above all – welcoming to all.



# 10 Things You will Love About Leicester

## 1

### The Home of Modern Tourism

Thomas Cook, founder of the former travel agency, created his first package trip in 1841 — a train journey from Leicester to Loughborough. If you fancy a taste of Victorian life, jump on the **Great Central Railway**, Britain's only full-scale double track main line steam railway.



## 2

### The Lost King... found

How can the grave site of an anointed King of England be lost, and then found more than 500 years later? After his death in battle in 1485, King Richard III was brought to the city and all but forgotten about — until 2012, when his remains were found buried beneath a car park. He was reinterred in Leicester Cathedral, and his original gravesite can be viewed at the **King Richard III Visitor Centre**.



### 3

#### Festival of Light

Outside of India, Leicester is home to the world's biggest celebration of the Hindu Festival of Lights – Diwali – and is enjoyed by thousands of people who come to see the glittering lights along the city's "Golden Mile".



### 4

#### Out Of This World Experiences

Leicester is one of the world's most active cities for space research and has been contributing to the exploration of the universe since the early 1960s. Visit the multi-award-winning **National Space Centre**, a family-friendly attraction with interactive exhibits, a planetarium and a programme of special events that will keep all ages entertained.

### 5

#### A Barrel of Laughs

**Leicester Comedy Festival** is the largest and longest-running comedy event in Europe, hosting 800 performances, across more than 60 venues! The annual event takes place in February each year, and will be celebrating its 30th anniversary in 2023.



# 6

## Home of the Attenboroughs

Leicester inspired David's love for nature and played host to Oscar-winning Richard Attenborough's acting debut at **The Little Theatre**. Portraits of the famous siblings hang in **Leicester Museum and Art Gallery**.



# 7

## Medieval Marvels

Leicester's Newarke area is full of historic gems — dating back to the 11th century, **Leicester Castle** was the official royal residence during the reign of Kings from Henry IV to Edward IV, and the castle's Great Hall was where one of England's earliest Parliaments was held. English poet and author, Geoffrey Chaucer, was married at nearby **St Mary de Castro Church**, and **Leicester Guildhall** was a meeting place and banquet hall for the Guild of Corpus Christi, now a museum and venue for visitors to enjoy.

# 8

## Making Waves

Leicester's waterway, the River Soar was once notorious for its unusual pink colour, dyed a dusky hue due to waste from textile factories. Now the 28 miles of water is a thriving wildlife habitat and boasts beautiful scenery. Get a different perspective of the city on a kayak tour, paddling by city landmarks including **King Power Stadium** and scenic **Aylestone Meadows**.



Location: Leicester Outdoor Pursuits Centre



# 9

## A Secret Diary

Did you know that novelist Sue Townsend — best known for creating literary character Adrian Mole — was born and raised in Leicester? To honour the author's legacy, the place where she began her writing career was renamed **Sue Townsend Theatre** and is a booming hub for the arts.



# 10

## Fearless Foxes

Leicester City are one of the oldest clubs in English football. In 2016, the formidable Foxes overcame 5000-1 odds to win the Premier League — for context, it was more likely to find evidence of intelligent alien life than Leicester win the league.





# Heritage and Attractions in Leicester

Discover 2,000 years of history through Leicester's Heritage Panels

The remarkable story of Leicester, the people and the places that shaped its history, can be discovered as you walk the city's streets. Over 175 of the colourful information panels have been installed to give residents and visitors the chance to find out more about Leicester's extensive history from Roman times, through the Middle Ages, to the manufacturing, engineering and transport of the Victorian era to the modern day.

These panels will help you to explore the city, learn why Leicester is a special place and how it has developed over the centuries. You'll find out more about its industries, its famous sons and daughters, where people enjoyed themselves, worshipped or made their homes.

For more information on the Heritage Panels, download the **Leicester Heritage Panel Guide** or follow them all on the Heritage Trail – both available online at [visitleicester.info](http://visitleicester.info). Pick up a printed brochure at the **Visit Leicester Information Centre**.

A wealth of local history can also be found on the Story of Leicester website: [storyofleicester.info](http://storyofleicester.info).

Visitors can take a deep dive into Leicester's rich history and bright future at the city's museums and attractions. Uncover more fascinating storytelling by going online to [visitleicester.info/uncoverthestory](http://visitleicester.info/uncoverthestory).

The incredible story of the discovery of King Richard III's remains under a Leicester car park in 2012 hit the headlines around the world. **King Richard III Visitor Centre** immerses visitors in that story, unravelling plots of medieval murder and mystery before following the amazing evidence gathering that led to the discovery of his long-lost grave and the forensic science that identified the remains. The visit ends at the site of the King's original grave, now preserved under a glass floor, where he lay undiscovered for over 500 years.







## Did you know?

Leicester has a rich history when it comes to railways, and is also the home of modern group tourism. In 1841 Thomas Cook organised the first group travel by rail from Leicester to Loughborough, founding the travel agency bearing his name. Find his statue outside **Leicester Railway Station**.



To the north of the city you'll find a one-of-a-kind railway experience at the **Leicester North Station of The Great Central Railway** – a double track railway and the only place in the world where full size steam engines can be seen passing each other. Trains run every weekend, with extras available like a First-Class Restaurant Car providing five course meals whilst your ride the rails, a 'Drive a Locomotive' Experience to make your

childhood dreams come true, and a programme of special themed events for all the family.

The **National Space Centre** offers visitors the opportunity to explore six interactive galleries, the UK's largest planetarium and the iconic 42m high Rocket Tower. Dedicated to the awe-inspiring story of space exploration, the Centre is both a museum and educational resource, suitable for all ages.





Since 1849 **Leicester Museums & Galleries** have been welcoming the public into their museums and venues for free, each offering their own wonderfully unique exhibitions and collection of artefacts. Leicester Museum & Art Gallery on New Walk is a highlight of a family friendly day out in the city. Children will be wowed by the museum's Dinosaur Gallery – see the Rutland Dinosaur and the graceful Barrow Kipper recreated in Augmented Reality and take them home with you! Other highlights include the Attenborough Collection of Picasso Ceramics – donated by Lord and Lady Attenborough – an internationally renowned German Expressionism Collection and regular pop-up exhibitions. The vibrant new Leicester Stories Gallery gives a voice to the people living in the city today.

Step away from the bustle of Leicester's busy shopping streets and travel back 600 years into **Leicester Guildhall**, one of the best-preserved timber framed halls in the country.





**Newarke Houses Museum's** two historic houses are home to fascinating collections of items making up people's day to day lives. Perhaps the best-known item is the famous chair belonging to Daniel Lambert, an 18th century Leicester resident who became famous as Britain's largest man.

**Abbey Pumping Station** gives further insight into Leicester's Victorian history with its industrial, technological and scientific collections, including four working beam engines, whereas **Belgrave Hall**, built in the 18th century, offers an oasis of peace and quiet in a busy city. From April to September the gardens are open every Wednesday and the first full weekend of the month, whilst visitors can also explore inside Belgrave Hall on special event days.

Leicester is also home to **Jewry Wall**, one of the largest surviving Roman structures in Britain today. The museum is currently closed for a major refurbishment, but the city

looks forward to welcoming visitors to a new state of the art immersive visitor attraction, which is currently being developed.

On **De Montfort University's** campus you can visit **The Gallery**, a free space showcasing world class contemporary art and at the **University of Leicester, Attenborough Arts Centre** offers performance, workshops, contemporary art exhibitions, and is a champion of emerging talent and disability-led artists.

Leicester is proud to support a number of modern artist-led galleries and exhibition spaces. **Leicester Contemporary** is an artist led space, with an emphasis on providing a conventional art gallery space with opportunities for both local and national artists. Across the city you'll discover **StudsonAme**, incorporating a project space, artist studios and education hub.

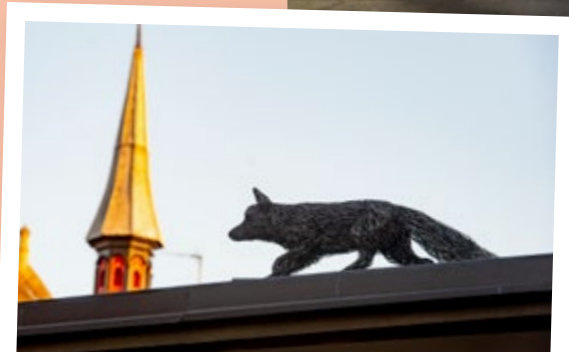
Of course, Leicester is also famous for its incredible street art. Events such as the acclaimed international street artist festival, **Bring The Paint**, alongside the opening of a dedicated street art centre have brought international attention to the city. You can visit [thetstreetart.guide](#) to view a map of Leicester's main street art sites, and also pay a visit to **The Mill by Graffwerk**, which houses a gallery space with regular events, artists workshops and artist studios.





# The Story of King Richard III and Leicester

The eyes of the world were on Leicester on 26 March 2015, when the remains of King Richard III were finally laid to rest — more than 500 years after his death at the Battle of Bosworth





A partnership between the Richard III society, Leicester City Council and the University of Leicester led to the university's archaeologists breaking ground in the most unusual of places – a car park – in 2012.

The car park lay on the former site of the church of the Grey Friars, a Franciscan Holy order, who were asked to bury the king without ceremony after his death at the hands of Henry VII. The discovery and subsequent identification of King Richard III is perhaps one of the greatest archaeological detective stories ever told, debunking a local legend that the king's remains were thrown into the River Soar during the Reformation.

Thousands of visitors flocked to the city in a bid to pay their respects to the last Plantagenet King of England before he was reinterred in a special ceremony at **Leicester Cathedral**.

There are several monuments, landmarks and attractions in the city and county dedicated to telling the story of the key moments in the life, death and discovery of King Richard III.





## King Richard III Visitor Centre

At the award-winning **Visitor Centre**, you can unravel medieval murder plots and follow the journey of the King from the battlefield of Bosworth to his final resting place. Discover how traditional archaeology and amazing evidence-gathering led to the discovery of the King's long-lost grave and how modern forensic science confirmed the identity of his remains. Then, in final homage to England's last true warrior king, see for yourself the very spot where King Richard III lay undiscovered for so long. In 2021 the centre was awarded the VisitEngland Gold Accolade for excellent within the visitor attraction sector.



## Leicester Cathedral

The remains of King Richard III were reinterred at **Leicester Cathedral** in 2015, under a two-tonne block of Swaledale fossil limestone. The sealed tomb has a deeply incised cross, and the darker plinth features his name, dates, motto and coat of arms.

The Cathedral is currently closed until 2023 whilst work takes place on the Leicester Cathedral Revealed project – a £12.7m scheme to restore and renew the Cathedral so it can be its very best as a place of worship, heritage, pilgrimage, hospitality, learning, sanctuary and celebration. This project includes the creation of a new Heritage Learning Centre, which will provide hospitality and learning spaces, as well as a new Orientation/Exhibition Gallery.







## King Richard III Statue & Towards Stillness Sculpture

Outside the visitor centre you can see the magnificent statue of King Richard III in the **Cathedral Gardens**. The bronze figure was donated to the city by the Richard III Society in 1980. Originally in Castle Gardens, the statue was expertly restored and moved to the Cathedral Gardens – just a stone’s throw from the king’s final resting place.

Also situated within the grounds of Leicester Cathedral is the sculpture entitled ‘Towards Stillness’ – it celebrates the discovery of the remains of the last Plantagenet King in Leicester, and tells the story of this warrior king’s last moments in battle.



## Bosworth Battlefield Heritage Centre & Exhibition

**Bosworth Battlefield Heritage Centre**, near Market Bosworth, tells the dramatic story of the Battle of Bosworth on 22 August 1485, which marked a major turning point in English history. With interactive, hands-on displays you can find out more about medieval warfare, how the battle unfolded and the impact of the new and powerful Tudor dynasty.



**Get a copy of the King Richard III Walking Tour from the Visit Leicester Information Centre for a tour of the city centre sites associated with The Last Plantagenet King of England. You can download the trail on [visitleicester.info/ideas-and-inspiration/trails](https://www.visitleicester.info/ideas-and-inspiration/trails)**

# Uncover the Story of Leicester's Hidden Heritage

Leicester is a remarkable city, with historic treasures and hidden gems around every corner — there are fascinating stories hidden in plain sight, waiting to be uncovered





In the heart of the city centre, present day **Leicester Market** is celebrated for its fruit, vegetables and fresh produce, but there's much more to it than meets the eye. Known to be over 700 years old but possibly older, the market was the largest public space in the city in the early 20th century and naturally became a place where people gathered for parades, celebrations, protests such as Alice Hawkins and suffragette lock in, and speeches including Ramsay McDonald MP addressing crowds from the steps of the **Corn Exchange**.

Visitors looking for Leicester Castle might be surprised by what they find. A motte-and-bailey castle was built in about 1068 and became the centre of power for the first Norman overlord of Leicester. The Castle Motte is visible today, accessed through a path in **Castle Gardens** or from the **Castle Square**.

**The Great Hall** came later, in 1150, and still stands as the oldest surviving aisled and bay divided timber hall in Britain, retaining some of its original 12th-century timber posts. The picturesque **Castle Gardens** and castle precincts are home to the medieval **St Mary De Castro Church**, John of Gaunt's Cellar, and historic town gateway and walls. The charming **Turret Gateway** and timber framed gatehouse at **Castle Gateway** sit either side of the Castle grounds, separating the area from the Newark.





Around the corner **The Magazine** was built in the 1400s and is one of Leicester's finest surviving medieval buildings, originally constructed as a monumental entrance into the religious precinct of the city. In the 17th century the gateway was used to store arms and munitions during the English Civil War and later it was used as a World War I recruiting station.

Elsewhere on the Newarke, you will find **Newarke Houses Museum**, **Trinity Hospital Chapel** which dates back to 1330, and the **De Montfort University Heritage Centre** — showcasing the ruins of the medieval Church of Annunciation along with temporary exhibitions.



Discovering the city's heritage isn't all about visiting historic venues, as many of the city's most beautiful buildings are now some of the best places to eat. By the mid-20th century, Leicester could claim to 'clothe the world', and textiles giants clamoured to call it home. Celebrating this prosperous era is the **Cosy Club**, a former knitwear factory, which as a modern restaurant stays true to its industrial roots with exposed steel girders and cotton spool decorations a backdrop to tapas and cocktails.

Denoting the year the former Old Grammar School was built, **1573 Bar & Grill** overlooking the modern Highcross shopping centre offers contemporary dining within its stone walls. A plaque outside lists among its benefactors wool merchant William Wigston, and dinner in his former home, **Wygston's House**, is also on Leicester's menu. This timber-framed restaurant is the oldest dwelling in the city, where diners can tuck into anything from a sirloin steak to a vegan burger. **The Globe**

is one of the oldest pubs in Leicester, serving beer as early as 1720. Its ales were brewed using spring water drawn from a well beneath the building. And the impressive building which is now **Middleton's Steakhouse & Grill** was once home to Pares's Bank – the most elegant bank in Leicester.

Uncover the Story of Leicester at [visitleicester.info/uncoverthestory](https://visitleicester.info/uncoverthestory)





# Festivals

Throughout the year Leicester is filled with colour and entertainment thanks to the city's buzzing events calendar



## Did you know?

The Guardian named **Leicester Comedy Festival** in their top 5 comedy festivals in the world.



Enjoy a vibrant programme of festivals, ranging from cultural celebrations to comedy, music and history — there's something for all the family to enjoy all year round!

Leicester is famously known for its annual Diwali celebrations. With the largest celebrations outside of India, the **Festival of Light** sees Leicester host a cultural programme of music, dance and fireworks for both the Diwali Lights switch on and Diwali Day itself.

Making Leicester giggle since 1994, **Leicester Comedy Festival** takes place every February, with venues across the city hosting hundreds of hilarious performances from household names and the best breakthrough talent. They have also developed the UK Kids' Comedy Festival, which was set up in 2019 as the first ever comedy festival aimed at children and families, and is home to the UK Pun Championships and the ongoing quest to find the one-liner to rule them all.

Children's entertainment is something Leicester does very well and **The Spark Arts Festival** presents unforgettable arts

experiences for young people aged 0–13. Bringing a much-needed splash of sunshine to every February, don't miss their programme of music, arts and performance.

Shining a light on the city, the bi-annual **Light Up Leicester** has become a must visit event. With the city glowing after dark, Light Up Leicester hosts a series of large-scale illuminated artworks by some of the world's leading light artists, offering visitors the chance to see the city like never before.

For music fans there are festivals celebrating all genres. Multi-venue **Handmade Festival** highlights some of the UK's best up and coming alternative artists, whilst Leicester International Music Festival is dedicated to bringing the world's best classical musicians to the city. Enjoy the sights and sounds of Reggae and Soca at the **Caribbean Carnival** and have a day out with the family enjoying the live music stage, amongst the local stalls and entertainment at the annual **Riverside Festival**.



# Shopping

Leicester city centre and its leafy neighbourhoods offer a great mix of high street giants and independent makers and creators, making it a natural shopping destination of choice





## City Centre

Generations of local people have met at Leicester's **Clock Tower**. It's one of the city's best known and most iconic landmarks, situated at the heart of the city centre retail area. Leading off from the Clock Tower, are **High Street, Gallowtree Gate, Belgrave Gate** and **Church Gate** where you'll find a variety of retailers, from big names like **M&S, Sports Direct, Blacks, HMV** and **Flannels**, to a fantastic section of independent shops and designer boutiques such as **Pilot, Maze, Jellyrolls, Toytown, Source, Lumbers, Langtons, Pragnell** and **Churchgate Jewellers**.

## Shopping Centres

Discover over 80 of the most imaginative and desirable shops in **Highcross**, catering for all your fashion and lifestyle needs — including **Zara, Next, Pandora, Ted Baker, Apple, Jo Malone** and one of the biggest **John Lewis** stores outside of London. Its stunning glass exterior is covered in a white filigree pattern, paying homage to

Leicester's close historical ties to the textile industry.

Across the city, you'll find **Haymarket Shopping Centre**, with over 60 stores — including big brand names such as **Primark, B&M, Matalan, Evans Cycles** and **TK Maxx**, as well as a selection of great independent retailers to choose from.



## Old Town, St Martins Square and The Lanes

If you want to discover new brands or find something a little different, head to the **Old Town** to meander through **The Lanes** and **St Martins Square**, where you'll find fashion boutiques, vintage clothing, jewellery and occasion wear from an eclectic mix of independents such as **Alrodia**, **Divine Boutique**, **Lanes Fine Jewellery**, **Impeys Occasionwear**, **Instinct**, **The Vintage Scene**, **Brides of Bond Street** and **Gini Fiorini**. Search for the perfect gift and gorgeous homewares in **Harriman & Co**, **Pomponette**, **Just Fairtrade**, **Fox Books**, **Harlequin**, **Flowerworks**, **Niche** or **Wingates Art Gallery**. And for fitness fanatics, a trip to **Withers Sports** is a must!





## The Arcades

Mini shopping centres in their own right, **Leicester's Arcades** — Silver, Odeon, Malcolm and Royal — offer a treasure trove of quirky shops, perfect for taking you off the beaten track whilst shopping in the city. From vintage treasures, gorgeous shoes and alternative clothing, to fabrics, crafting, games, second-hand books and records — there's something for everyone.

## Leicester Market

Situated in the heart of the city centre, **Leicester Market** has a proud history of over 700 years and is the perfect place to stock up on local products and essentials. The **Indoor Food Hall** is home to traders selling quality meat and fish, artisan cheeses, cooked sliced meats and local pork pies amongst other delicacies. In the **Outdoor Market** you can browse fruit, vegetables, flowers, fabrics and household goods — you'll find it all and more here. Adjacent to the Market is **Green Dragon Square**, a large, open public space used to stage special events throughout the year. The market area is due to be redeveloped to add more variety and food and drink venues.





## Neighbourhood Shopping



## Golden Mile

Steeped in history, the **Golden Mile** holds a story of resilience and enterprise. Independent businesses fill the space with colour and vibrancy — **Belgrave Road** is now a huge marketplace for Indian food, spectacular saris and spices, as well as what is claimed to be the highest concentration of Indian jewellery shops in the UK.

## Narborough Road

Situated in the West End of Leicester, **Narborough Road** has earned itself the title of the most multi-cultural street in the country. With its array of retail outlets run by residents from all corners of the world, you'll find independent grocery stores, DIY, homeware, hardware, second-hand stores, stationers, mobile phone, music and fashion shops.



## Queens Road & Clarendon Park

Situated in the south of the city **Clarendon Park** and **Queens Road** are distinctive shopping areas where you can spend time exploring the independent retailers, stopping off to refuel at one of the many cafés, bars and restaurants on the way. Pick up the perfect gift, or a little treat for yourself from shops such as **Shakup Records**, **Karma Corner Gifts**, **Bloom Project**, **Art of Cards** or **Michael Grundy Jewellers**. Enjoy keeping fit? **Leicester Running Shop** and **Julie's Cycles** are the shops for you. Prefer sampling a new tittle to picking up a new pair of trainers? Head to **The Offie**.

## Stoneygate & Allandale Road

The **Stoneygate** shops offer a tranquil retail experience within one of the most beautiful areas of Leicester. Sift through the rails and pick up a brand new outfit at designer boutiques such as **Polly's**, **Abiti Ladieswear** and **Condotti**. Choose from a gorgeous selection of cards, gifts and homeware at **Nest**, **Artifact**, **Lily & Gray**, **Housekeeping** and **Dutton's Fine Furnishings** — don't forget to visit **Outerspace Home & Garden** too!





# Theatre & Cinema

## Theatre

Showstopping musical hits, award-winning touring performances and locally produced stage productions – Leicester’s theatres are bursting with energy. At the heart of the Cultural Quarter is state-of-the-art theatre, **Curve**. This multi award winning theatre has a reputation for producing and programming a bold and diverse programme of musicals, plays and dance, Curve is one of the leading theatres in the country.

Usually known for its musical performances spanning over 100 years, **De Montfort Hall** also has a programme of one-night shows, including a popular Christmas panto full of family fun!





Leicester's oldest theatre is a title held by **The Y Theatre**, who continue to provide a bustling live performance venue featuring an eclectic programme of music, comedy, theatre, dance and family shows. Providing regular opportunities to the city's budding performers, **The Little Theatre** is home to Leicester Drama Society and is in fact where the late Lord Richard Attenborough began his acting career.

One of Leicester's best-known names to have impacted on the arts world is author Sue Townsend. Her work is honoured through the naming of **The Sue Townsend Theatre**, which regularly welcomes performances by local and national arts, music, theatre and dance companies. The city also has a number of community centres offering a wide variety of activities and services – one of these is **The Peepul Centre** in the heart of Belgrave, which offers a diverse arts programme within their modern theatre.





## Cinema

From the latest blockbuster Hollywood movies to independent arthouse films, Leicester's cinemas complement each other perfectly in their offering to ensure you don't miss out on anything. For big Hollywood releases **Showcase Cinema Deluxe at Highcross** — which has a Directors Lounge where guests can enjoy a full bar service — and **Odeon at Freemans Common**, which offers a comfortable experience including recliner seats.

For film fans, a visit to **Phoenix Cinema and Arts Centre** is an absolute must — as Leicester's centre for independent cinema, art and digital culture, it shows everything from micro-budget independent films and the latest blockbusters as well as hosting a regular programme of festivals and events.

Phoenix is currently undergoing an exciting multi-million pound expansion that will see the addition of two more screens, a new art gallery, rooftop terrace and more spaces for making and learning. This is all part of their ambition to make inspiring film and art available to all.

**Piccadilly Cinema** in Belgrave shows Bollywood favourites as well as major blockbusters with screenings in a variety of languages. There's also a secret vintage cinema in the city at **The Queen of Bradgate** — a 20-seater vintage cinema space that's available for private hire.





## Café Culture

Leicester is home to an array of cafés across the city centre and neighbourhoods, ranging from atmospheric independent coffee shops to historic tearooms





**St Martin's Coffee Shop** is a cosy home from home, serving speciality coffee from Allpress Espresso, and the roastery of the same name supplies cafés across the city and further afield. A local roastery and café with a difference is **Northern Cobbler** (Queens Road) — a one-of-a-kind café and footwear shop. **The Coffee Obsessive** (Francis Street) is dedicated to bringing coffee from some of the best roasters around the UK and Europe to the people of Leicester, whereas **200 Degrees Coffee** ship the finest green beans from Rainforest Alliance farms back to the UK, where they are roasted at 200° centigrade to give a full bodied, smooth taste.

Other speciality coffee highlights include **Ninety-Six Degrees** on Braunstone Gate, who serve a range of coffees alongside a delicious food menu, and **Bread & Honey**, where the house brew

is London's Monmouth Coffee. Get your morning coffee on the 'gram at **Saints of Mokha**. Their Red Velvet blend (red with cocoa undertones) will bring a pop of colour to your insta profile and delight to your tastebuds, or if you want something sweet on the side of your cuppa, head to **Orso** — where a custard cream treat comes as standard with your hot drink.



## Did you know?

Your choice of morning coffee can make a difference. **6 Degrees Coffee House** is a social enterprise of Open Hands Trust, a local charity which helps those in need, whilst **Leicester Coffee House Company** provide learning opportunities for young people with social and mental health issues. **Café No. 7** serves coffee from Change Please, a social enterprise that uses profits to train people experiencing homelessness to be baristas.

When it comes to tea, there are a world of traditions to indulge in in Leicester.

**Mrs Bridges Tearooms** in the city centre is a popular place with locals and visitors alike; it makes for a timely pit-stop midway through a shopping trip for afternoon tea or cream tea. For a delicious three-tiered afternoon tea with friendly service, head to **Skylark Bakery** in Clarendon Park, or treat yourself to a luxury experience at **The Belmont Hotel** or **Winstanley House**. Enjoy a sip of the East at **Chaiiwala**, with five branches throughout the city, or sample **Café Delhi's** High Chai menu for a taste of the rich traditions of India's chai culture. Bubble Tea is surging in popularity, with plenty of outlets popping up around the city serving the refreshing tea-based drink which can be customised with flavours and toppings. Check out **Bubble CiTea**, **Chatime Leicester**, **Mooboo**, **CUPP Bubble Tea**, **Lay Tea** and **Seven Tea**.





Satisfy those midday hunger cravings by stopping for a delicious brunch or lunch in the city. **Kai Kitchen** and **James' Café Bistro** are both intimate and cosy cafés, with delicious pancake stacks and all kinds of eggs to start the day right – or choose bottomless at **Knight and Garter**. When it comes to lunch, **Grays** serve fresh, seasonal food with an exciting and ever-changing menu, best enjoyed on a sunny day in their peaceful courtyard. Or why not find a little corner of peace in **Bryter Moon Deli**, one of the city centre's best-kept-secrets when it comes to licensed delis and cafés.

Those looking for a healthy option can enjoy delicious, Korean-inspired nutrient rich nourish bowls at **Grounded Kitchen**, or head to **Oshen Poke** for the fresh, healthy, nutritious flavours of Hawaii. Veggies and Vegans are well catered for in the city which coined the word 'Vegan.' Speciality venues include **Prana Café**, **World Peace Café**, **The Good Earth**, **Healthy Louisa** and **Desi Street Food**.



If you're after something sweet, dessert lovers are spoilt for choice in the city with a range of options that will surely satisfy any sweet tooth. Anyone with a fondness for a slice of cake should visit **Chloe Gourmet**, a French patisserie bringing a taste of Paris to Cank Street – it's the perfect treat after one of their croque-monsieurs. For North African inspired pastries and much more visit **La Forêt Café** on King Street. Over in Stoneygate, **Baker Street Cakes** on Allandale Road is a macaron and cake boutique with an ever-evolving selection of inspiring desserts. And just north of the city on Frog Island, don't miss **Bitsy's Emporium of Awesome**, whose sweet treats can only be described as edible works of art. **Gelato Village** is an award-winning gelateria serving a diverse range of flavours, and you'll find delicious American-style milkshakes at **Shakeaway**.





# Live Entertainment

## Live Music

Leicester has a long tradition of supporting the best of the UK's breakthrough music talent. The city is home to a mix of larger concert halls and smaller independent venues, which between them support a thriving entertainment scene.

Regularly hosting household names, **De Montfort Hall** and **O2 Academy**, are highlights on the city's live music map. Then as the summer approaches keep an eye on event listings from the **Uptonsteel County Ground** as they host their larger outdoor music performances.

Whatever your preferred genre of music, you'll be able to enjoy live performances every night of the

week. **The Musician** is known for their programming across blues and folk, whilst **Firebug**, **The Soundhouse**, and **Duffy's Bar** regularly host the UK's best breakthrough alternative acts. In the summer you can even enjoy plenty of al fresco entertainment at **The Soundhouse** and **The Donkey** with their outdoor stages.

The city's current generation of vibrant musical performers is very much flying the flag for diverse, dynamic, original music. **2Funky Arts** is at the forefront of advancing and celebrating arts & music of black origin, and their venue, **2Funky Complex** in the West End, has an incredible programme of live events including performances and workshops.



## Comedy

Throughout the year Leicester's venues are packed with regular comedy nights, household names and the best new talent on the circuit. You'll find TV regulars such as Sarah Millican, Romesh Ranganathan and Paul Chowdhury visiting **De Montfort Hall** and **Curve** on their UK tours, whilst the city's pubs and venues host breakthrough and regular work in progress shows. Keep an eye on venues including **The Big Difference** and **Manhattan34** for their regular laugh out loud events.

Highlights include monthly shows from **Jokes on Us** as part of Leicester's popular street food event, Last Friday, at **LCB Depot**, and **Just The Tonic** who continue to bring fantastic comedy line-ups to the city each Saturday night. **The Black Horse** in Aylestone has secured some incredible comedy names for their weekly comedy shows, but the catch is you don't know who's going to be on until you get there.







## Activities

Leicester is alive with activities to take you through from daytime to evening



Planning a day out with the family? Immerse yourself in the sights and sounds of the rainforest at **Treetop Adventure Golf**, or if you're looking to get active head over to **Boost Trampoline Park** for plenty of bouncing fun. Then it's time to check out your strength and endurance at **Ninja Warrior Adventure Park** – based on the ITV programme, you can climb, balance, jump and swing across different obstacles using and developing your Ninja skills. From a bouldering session at **Social Climbing** or flying across Europe in the cockpit of a Spitfire plane at **Leicester Simulations**, Leicester is full of exciting options for a day out with a difference.

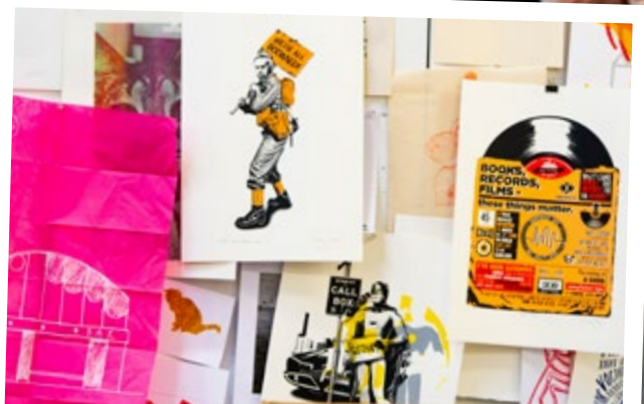
If you're planning a get together with friends, then a competitive element always adds a little extra excitement. **East Street Lanes** is Leicester's independent boutique bowling alley, featuring 8 bowling lanes alongside a stylish cocktail bar and arcade. Situated just next door, **Caddyshackers**, the home of crazy golf in Leicester, takes

you through 18 themed holes – from a brewery theme, to a building site and even a Leicester City themed football hole. If you're looking to take the competitive element up a notch, how about axe throwing? Leicester's only axe throwing lanes are situated inside **Caddyshackers**, making it an exciting multi-activity destination for a team night out.

Across the city, **Lane7** offers a complete entertainment destination. Situated in the transformed former Leicester Central Station, Lane7 houses the city's biggest bowling alley and social gaming zone. Keep an eye on their upcoming events for music nights, themed quizzes and plenty of surprises. In Leicester you can also travel to far off places at one of the city's escape rooms. Enjoy a family friendly Egyptian mystery in *The Betrayal of Cluetankhamun* at **ClueHQ** or join your friends as you tackle *Operation Magnus* in **Escapologic's** specially designed 1942 bunker.



If you've ever wanted to learn about handcrafting your own chocolates, then look no further than **Cocoa Amore**. The award-winning chocolatier offers workshops in the art of chocolate making, so you too can create decadent, handcrafted chocolates. Or you can take a trip to Sicily at **Veeno** with their signature wine tasting experiences. Getting hands on doesn't just have to be with food and drink. In Clarendon Park **Eskimo Blue** offer pottery classes, or you may choose to develop your artistic skills with a class at **Leicester Print Workshop**.





## Outdoor Activities

Grab your friends and take the opportunity to see Leicester from a different perspective by travelling along the rivers and canals paddling your own boat. **Leicester Outdoor Pursuits Centre** offer an Urban Paddle trip which starts at Aylestone Meadows, and **Let's Get Lost** offer self-guided and guided kayak and paddleboard adventures. Of course, Leicester has not one, not two but three crazy golf courses in the city centre, but what about practicing your full golfing skills? **Humberstone Heights Golf Club** offers an 18-hole golf course with a 9-hole pitch & putt, a 30-bay driving range, chipping area and a practice putting green. Whilst at Humberstone Heights you can also enjoy a game of FootGolf on a 9 or 18 hole course – an exciting mix of football and golf, offering an ideal activity for groups looking to try something new. A smaller 3 hole FootGolf activity is located at Knighton Park.

Location: Leicester Outdoor Pursuits Centre

Make a regular Saturday morning date in your diary as **Parkrun** takes place every week on **Victoria Park** and **Braunstone Park** – it's a weekly community 5k event, and registration is free.

You can also explore Leicester by bike with the city's e-bike sharing scheme, **Santander Cycles**. Offering a quick, easy and healthy way to move around Leicester, the growing scheme has docking stations located right across the city.



# Sports Clubs

Leicester is a fantastic sporting city, with a strong history of championship winning teams, producing homegrown talent and cultivating a strong local supporter base. From the Premier League to the British Basketball League, the city is never short of live action for you to follow.



Of course, Leicester is home to 5000-1 Premier League Champions, Leicester City. It's no surprise that match tickets sell out for most home games, but if you keep an eye on the website you can often grab tickets for cup and evening games to see your favourite star players. Following their promotion to the WSL, Leicester City Women now play their home games at **King Power Stadium**, offering a fun day out for all the family.

For rugby fans, you can see a host of international stars and England favourites on a match day at **Mattioli Woods Welford Road Stadium** as Leicester Tigers once again push for league and cup success. New for this season, Leicester Tigers have followed the success of the England women's team with the launch of a brand-new women's and girl's rugby programme here in Leicester.

You can also catch the action with British Basketball League Champions, Leicester Riders, who play their BBL

and European home games at the **Morningside Arena** in the city centre. The Morningside Arena also plays host to Championship Boxing, Snooker and Darts tours. As the summer months approach eyes turn to the **Uptonsteel County Ground**, home of the Leicestershire County Cricket Club Running Foxes. County Championship fixtures throughout the summer are complemented by exciting T20 Vitality Blast and one-day Royal London Cup action, which is a perfect introduction for new cricket fans.







## Did you know?

**Bradgate Park** was the birthplace and childhood home of the 16th century nine days Queen of England, Lady Jane Grey. Explore the ruins of her home within the Park.

# Green Spaces

Leicester's parks and green spaces offer a wealth of opportunity to walk, explore and keep fit and healthy



Just a short stroll up London Road you'll find **Victoria Park**, popular with the student population due to its location next to the University of Leicester, and providing a wonderful green space for running, sports and picnics between Clarendon Park and the city centre. For more active visitors, the park is home to tennis courts, football and rugby pitches, a floodlit 3G pitch, skateboarding and an outdoor gym.

Perhaps one of the city's best known parks is **Abbey Park**, due to its historical significance. As well as strolling around the remains of the twelfth century Leicester Abbey and the ruins of Cavendish House, a 17th century mansion, visitors can also enjoy the boating lake, bowling green, tennis courts and more. Don't miss their miniature railway and **Pets Corner**, both hugely popular features of the park.

To the south of the city, **Knighton Park** offers a lovely walking spot, with a recognised nature reserve and plenty of activities to keep you entertained.

For walkers and cyclists, **Aylestone Meadows** offers the opportunity to enjoy a four mile pathway along **The Great Central Way**. A little further out of the city, **Watermead Country Park** is a haven for wetland wildlife, proving popular with nature lovers, walkers and families, whilst for plant lovers, the University of Leicester **Botanic Garden** offers the opportunity to explore one of the most diverse plant collections in the region.

**Castle Gardens** is a peaceful green space beside the **Grand Union Canal** in Leicester. The park is the perfect stop for heritage lovers — set in the heart of the former medieval city, the area around the park includes the Great Hall of Leicester Castle as well the medieval castle motte. In the city centre, **Jubilee Square** and **Town Hall Square** are the perfect place to take a breather and relax — the latter is home to the city's famous lion head fountain.

Why not get back to nature and enjoy a great day out in the stunning

countryside? **Bradgate Park**, renowned for its fine herds of deer, is the only remaining enclosed medieval deer park in the East Midlands. Enjoy the rich history and the enchanting beauty of almost untouched nature; marvel at oak trees that are over 500-years old, see Old John tower — one of Leicestershire's most famous landmarks — and walk alongside the beautiful stretch of water, waterfalls and pools of the River Lin.







## Restaurants

**A world of culinary delights awaits you when you make a date with Leicester**

Japanese, Indian, Italian, Turkish, Vietnamese and so many more cuisines are here on your doorstep, right down to a hearty Sunday roast, you can enjoy a world of flavours with every few steps you take across the city.



The city's diverse communities shine through in the vast range of dining options on offer. With vegetarian and vegan dining now more popular than ever, Leicester has a range of specialist restaurants, as well as those who offer extensive vegan alternative menus. Many of Leicester's restaurants now offer halal too, so always check ahead with each establishment before booking a table.

Whether you're making a date with friends, family, your partner or colleagues, or just treating yourself, you're sure to be spoilt for choice.

In Leicester's Old Town, **St Martin's Square** offers a thriving food and drink scene with independent eateries and household names sitting side by side, including Thai tapas favourites **Giggling Squid**. For burger fans, make sure you get a date with **Crafty** in your diary — think handcrafted burgers, pimped fries and craft beers. For a trip to South America, **Sonrisa** offers a lively taste of Buenos Aires, or for more of

a neighbourhood Cantina feel, head to **Bodega**. Moving into Europe and Leicester is home to fine Italian dining — at **Casa Romana** you can choose from their daily fresh fish selection or authentic pasta dishes and at **Café Roma** you can experience a family run trattoria style Italian.





Pizza lovers will delight in the range of doughs on offer in the city. From truly authentic Neopolitan pizzas at **Maurizio's**, to San Franciscan pizza bases at **Pizza Punks**. There's also **Dough What** and **Peter Pizzeria** offering doughy delights elsewhere in the city centre, and independent sourdough pizza locals, **PAI**, at the heart of St Martin's Square.

Dive into Eastern flavours with a mix of well-known chains and quirky independents. Find **Wagamama** and **Yo Sushi** at Highcross, as well as **Bonzai Sushi Bar** and **Wakaze** for hand rolled sushi, Bento boxes and rice bowls.



Celebrating a special occasion? Head to **Knight & Garter**, offering delicious, fresh, seasonal menus in beautiful surroundings. **Black Iron at Winstanley House** is just 10 minutes' drive from the city centre and is a modern British steakhouse and bar, which also has a sister restaurant **Black Iron Social**, which is based in the city at **The Gresham**.

Need somewhere suitable for a celebration? Try **The Case** or **Middleton's Steakhouse & Grill**, either work as ideal destinations for a special occasion.

Leicester was recently ranked second in the entire world for the most Indian restaurants per capita in the city. Of course, curry is a general term for the vast choice of Indian and South Asian cuisine from fine dining to street food, and you'll find some of the UK's most delicious options here on your doorstep.

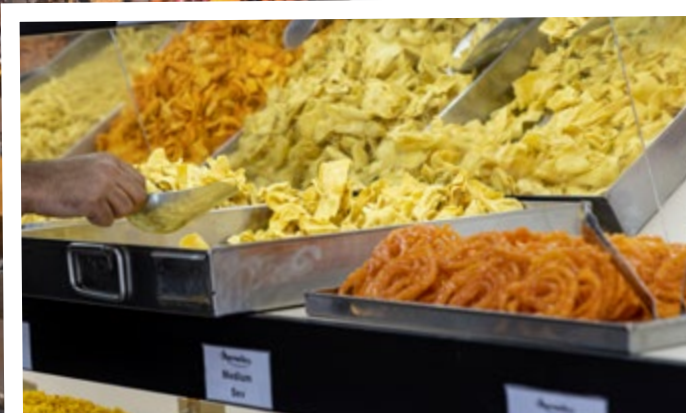
For a special occasion, enjoy a touch of fine dining at **Tandem**, which offers a private Chef's table in sumptuous surroundings. Find the multi award-winning **Chutney Ivy** in the Cultural Quarter or visit popular high-end Indian restaurant **Mem Saab** on Vaughan Way. There are also numerous restaurants offering specialist menus and traditional cooking techniques, including **Kayal** in the city centre. Or for a stylish, modern approach to Indian dining, head to popular city centre favourites **Tamatanga** and **Mowgli**.







As you walk along Leicester's **Golden Mile** there are countless Indian restaurants awaiting you and the area is steeped in history with a number of establishments, who have been serving the area for decades. **Bobby's** has a fully vegetarian menu and offers top-quality Gujarati cuisine, or book a table at **Feast India** for the ultimate Indian experience with six open kitchens offering Indian and Indo-Chinese buffet dining. No trip to Belgrave Road is complete without visiting **Sharmilee** – pop by to pick up some Indian sweets and savouries to take away or grab a table in their fully vegetarian restaurant.



Beyond the city centre, Leicester's neighbourhoods boast their own wonderful selection of independent restaurants that contribute to Leicester's vibrant restaurant scene.

Centred around the bustling Queens Road, **Clarendon Park** is home to a wonderful mix of independent venues to meet friends for lunch or enjoy a special evening out. This isn't one for a flying visit — from one end to the other you can enjoy no less than 11 independent pubs and restaurants within just a few minutes' walk of each other. Enjoy a selection of Spanish tapas with a glass of Sangria at **Barceloneta**, a taste of Portugal at **Port & Nata**, sample some pub grub favourites at **The Clarendon** or if you're looking to spice up your evening, pay a visit to one of Clarendon Park's Indian restaurants — **Spice Bazaar**, **Friends Tandoori** or **The Verandah**.

**Narborough Road** was officially recognised as the most diverse street in England thanks to the twenty-

two nationalities represented by its wonderful mix of shopkeepers and restaurateurs. Enjoy a taste of Japan on Braunstone Gate at **Little Tokyo** and just across the road, you'll find Turkish charcoal grill restaurant, **Efes Mangal**. Continue your culinary journey in the West End at **Cedars Lebanese Restaurant**, or choose vegetarian Indian cuisine at **Sardaar**.

As one of the main routes into Leicester, **London Road** has always been a hive of activity. Now, with a spate of new openings, it's fast becoming one of Leicester's most exciting foodie hot spots. From Turkish cuisine at **Konak** and **Etcí Baba**, to Chinese and Japanese dishes at **Karamay** and **Mutsuki**, South Indian cuisine at **Chettinad** or Italian dishes at **Oggi**. On **Evington Road** you'll find great-tasting Indian delights at **Rise of the Raj** or **Chatwala**, Indo-Chinese at **Sizzling Spice** and a true taste of Portugal at **Café Portugal**.



# Pubs, Bars and Clubs

Leicester boasts a great range of pubs, bars and clubs, ideal for socialising with friends or celebrating a special occasion





Those looking for real ale and craft beer will find plenty of choice in the city. Small but perfectly formed, **The Blue Boar** has the accolade of winning Leicester CAMRA's Pub of the Year award three times. It is one of Leicester's finest micro-pubs, selling a selection of real ales, ciders, wines and snacks. **The Real Ale Classroom**, on Allandale Road, is another must-visit destination for ale lovers, selling a range of ale straight from the cask — even a seasoned drinker may learn a thing or two!

The **Two-Tailed Lion** is a traditional English free house with modernist flair, featuring cosy interiors and offering a rotating selection of craft beers alongside ales, wines and spirits. In **St Martin's Square, Tonne** is a specialist craft beer bar, with seven keg taps and a large range of cans and bottles from around the world. **BrewDog** has 28 taps of curated craft beer, whilst **The Queens Road Tap** is a micro-pub serving a selection of ales from Tollgate Brewery along with several guest kegs.

There are two city breweries where you can sample local drinks straight from the source. **Framework Brewery** is based in an impressive Victorian building, brewing a range of permanent and seasonal craft beers and home to the Framework Tap Room, where customers can enjoy a taste what's on offer. On Braunstone Gate, **The West End Brewery** is a brewpub which sells beer made on the premises, as well as guest beers and food. Both offer tours and experiences.

When summer comes, get your shades on and enjoy a beer garden. Popular choices in the city centre include **Rutland & Derby** garden and roof terrace, **The Tree** and **Bruxelles Leicester**. London Road is home to **The Old Horse** traditional pub with a large rear garden, and the **Marquis Wellington** offers beach hut style heated, covered seating, ideal for when the evening draws in... or the English summer gets unpredictable!





For traditional pub fare try **Wygston's House**, **The Globe** or **Queen of Bradgate** — all pub and restaurants serving classic pub food alongside more formal dining options. Award-winning **Knight & Garter** on Hotel Street offers a gastro-pub experience, with a chargrill steak menu and weekend crustacea bar offering oysters. Further afield, **The Cradock Arms** in Clarendon Park is a relaxed restaurant and bar delivering a great pub and food experience, as well as having a large outdoor garden for summer evenings All are great options for a city centre Sunday Lunch.



If you're looking for a cosy, relaxed atmosphere for drinks, head to **The Exchange Bar** in the Cultural Quarter. With a wide choice of gins and other spirits, quality draught beers, wines, cocktails and soft drinks, there's something for everyone.

Getting dressed up for a night out? **45 West** is an independent gin and cocktail bar serving signature Burleighs Gin alongside a well-stocked bar and popular live jazz nights. For stunning interiors, look no further than botanical themed **The Bottle Garden**, or relax in the Miami Beach, Art Deco vibe at **Audrey**. On Queens Road, **Bar Dos Hermanos** is styled as a 1940's Cuban American bar, boasting an extensive range of Cuban cocktails as well as other favourites.

There are great cocktails available all over the city, but if you're looking for something a little out of the ordinary why not head to **The Gadabout** – where the signature cocktail menu is inspired by world travel and each is served



in its own stylish yet unique way. **33 Cank Street** offer a mixture of their own creative concoctions alongside classics for you to enjoy – again, served with quirky twists including smoke bubbles and biscuits. Upstairs you'll find **Little Sister**, focussed on great drinks and great music. Combine your night out with a science experiment and sample **The Turkey Café's** colour changing mojito, or head to **Fat Cat Lounge and Cocktail Bar** who offer tailor-made cocktails, where you can pick your flavour of choice when ordering mojitos and daiquiris.





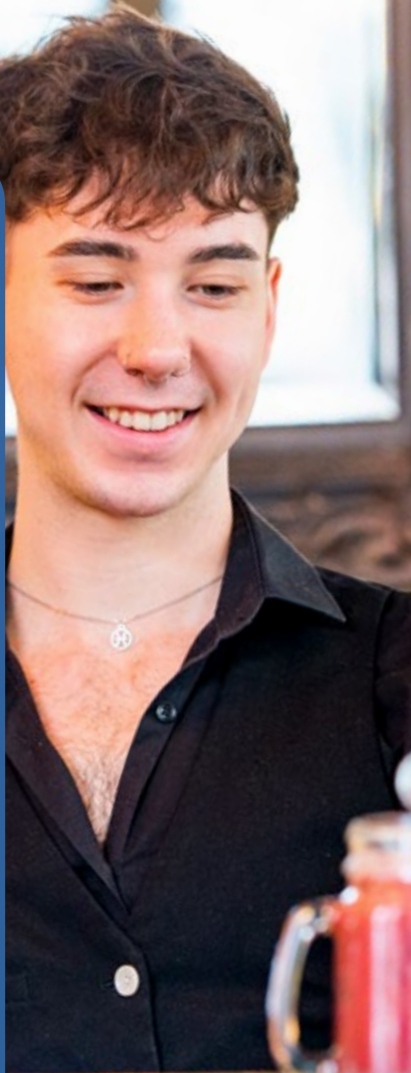


For a fun night out, jump behind the bar with some of the city's best mixologists and learn the secrets of the trade at a cocktail class. **Manhattan 34** offer the chance for you to learn how to shake, rattle and roll like the professionals – with two cocktails expertly made for you, followed by the chance to make your own.

If wine is your tippie of choice pay a visit to **Veeno Italian Wine Bar** to enjoy hand-picked Italian wines. Why not take part in a wine tasting or try some of their authentic Italian food? If you like your grapes with added fizz, don't miss **The Case Champagne Bar and Snug**.

Whilst drinking should always be done responsibly, there are many who choose not to drink alcohol at all. Non-alcoholic options can be found in bars across the city, but New York style bar **&Kith** is a one-of-a-kind, offering a 100% dry bar. The drinks are showstoppers – here you get the full, high-end cocktail experience but with a range of 0% alternatives.

Leicester is a friendly city that celebrates diversity in all forms, including a lively scene for the LGBTQ+ community. **The Dover Castle** is Leicester's longest standing LGBTQ+ pub, hosting live entertainment including open mic nights, quiz nights, DJ sets and drag cabaret shows. **The Rainbow and Dove** is a friendly café-bar, known for cocktails and great food menu, including a Drag Bottomless Brunch every Saturday. When night falls and you want to cut some shapes on the dancefloor, head to **Helsinki** – a thriving LGBTQ+ club that welcomes party-goers with rainbow fluorescent lights at the entrance. Expect a lively atmosphere and plenty of banging house, dance, chart and hip-hop tunes.



When it comes to clubs, there are a great range of venues in the city to cater to all tastes, so whatever style of music and vibe you like you can put on your dancing shoes and have a fun night out. Popular late night haunts include **R/Bar**, **Club Republic**, **Venom**, **Waikiki**, **Mosh** and **Fan Club**. For those who want to keep the party going until dawn, pay a visit to **The Basement**, open until 6am.



# Accommodation

Whether you're visiting the city with friends, catching up with family, attending an event or staying over for work, Leicester has a great range of places to stay





There's accommodation to suit everyone's needs – from couples looking for a romantic break in a penthouse suite, to exploring a historic hideaway on a weekend away with friends. There are rooms for those coming to the city on a shopping break and those looking to cheer on their favourite team at a sporting fixture.

When it comes to high quality hotels in historic, character properties you will be spoilt for choice. Enjoy luxury accommodation across the city at **St Martins Lodge, Mercure Leicester The Grand Hotel, The Belmont Hotel, The City Rooms, College Court, Villare hotel, Winstanley House** and **Hotel Brooklyn**.

The city's **Holiday Inn** was the first of the chain to open in the UK, whilst **Novotel Leicester** and **Ramada Encore** offer stylish and modern rooms in the city centre.

**Aparthotels** offer the perfect solution for families catching up with relatives, giving you a little more space to relax in (and for the kids to spread out

in!). Try **The Gresham Aparthotel**, a stylish 121-bed Aparthotel complete with a restaurant and bar, gym, conference facilities and state-of-the-art co-working spaces, or head to Leicester's **Aparthotel Adagio**, with 98 contemporary designed and furnished apartments, which are like a home from home.

For those looking for a budget break, there is a huge amount of choice for savvy stays, including **Ibis** and **Ibis Budget, Hotel Campanile, Holiday Inn Express, Premier Inn, Travelodge City** and **Travelodge Central**.





## Business Stays

Visiting Leicester for a business meeting or conference? There's plenty of room for you and your guests, with a number of hotels also offering business and conferencing facilities.

Whether staying over for meetings, visiting as a delegate, or staging your own conference or event, Leicester has a wealth of hotels and conference centres that are able to offer bespoke solutions to your business travel and event needs.

**Meet Leicester** provides a free and impartial venue finding service for conference and meeting organisers. Let them know the dates, delegate numbers and requirements, and they will ask the suitable venues for rates and availability which will be put into a proposal and sent to you.

The Meet Leicester team represent over 50 venues from modern and contemporary hotels to the more unusual National Space Centre and King Richard III Visitor Centre.

The website [www.meetleicester.co.uk](http://www.meetleicester.co.uk) provides all the information you require to make your next event here in Leicester a successful one.

Contact the team on [conference@leicester.gov.uk](mailto:conference@leicester.gov.uk) or call 0116 4542724 to discuss your requirements further.









## Travel

To find out about the many ways to travel around Leicester and Leicestershire, go to **[choosehowyoumove.co.uk](https://www.choosehowyoumove.co.uk)**

This website has a journey planner that gives information on all the different options, whether you're travelling by train, bus, car or on foot. Simply enter details of where you are and where you want to go, and choose the best option for you.



## Trains

Leicester's railway station is on London Road (A6) in the city centre, LE2 0QB. You can walk to the main shopping area in five minutes. From Leicester you can get direct trains to London, Birmingham, Nottingham, Derby, Sheffield and Stansted Airport, as well as local towns.

See: [nationalrail.co.uk](https://nationalrail.co.uk)

For enquiries contact National Rail:  
03457 48 49 50

## Airports

The closest airport to Leicester is **East Midlands** — 18 miles north on the M1. Visitors travelling from East Midlands Airport can travel to Leicester city centre on the **Skylink** bus. Skylink operates 24 hours a day, seven days a week. For a timetable and more information, please visit [skylink.co.uk](https://skylink.co.uk)

Travellers from **Birmingham International Airport** can take the train to **Birmingham New Street** and change to a direct train to Leicester. Leicester also has a direct rail link to **Stansted Airport** in Essex.



## Coaches

Long distance coaches to Leicester arrive at **St Margaret's Bus Station** LE1 3AG, by the inner ring road (A594) Burleys Way. St Margarets bus station is believed to be the first carbon neutral bus station in the UK.

For more information go to [leicester.gov.uk/stmargarets](https://leicester.gov.uk/stmargarets)

National Express: 0871 781 8181



## Buses

All buses into the city, including the Park & Ride services, drop you within walking distance of the city centre. For bus information go to [leicester.gov.uk/transport-and-streets](http://leicester.gov.uk/transport-and-streets)

Many local services operate from **Haymarket Bus Station** located at 37 Belgrave Gate, Leicester, LE1 3HP

## Park and Ride

The Park and Ride service offers users a fast, frequent and hassle-free journey into Leicester city centre on electric buses. The service operates six days a week, Monday to Saturday, from 7am until 7pm, from three sites. The three sites have over 1,500 car parking spaces.

### North (for A6/A46) Birstall: Service 303

**Birstall Park & Ride**, Loughborough Road, Birstall, LE4 4NP. Route stops at **Haymarket Bus Station** and **Causeway Lane**.

### West (for M1 J21a/A47) Meynell's Gorse: Service 103

**Ratby Lane**, Leicester, LE3 3LF. Route stops at **St Nicholas Circle**.

### South West (for M1 J21/M69) Enderby: Service 203

**Leicester Lane**, Leicester LE19 2AB. Route stops at **Leicester Royal Infirmary**, **Oxford Street** and **St Nicholas Circle**.

Day tickets cost £3 per person. Group ticket: £3 for a car with up to five occupants travelling together in both directions. Children under five travel free. Parking is free. Buy a ticket on the bus.

Find out more at [choosehowyoumove.co.uk](http://choosehowyoumove.co.uk)







## Walking

Find your best walking route from door to door on on [choosehowyoumove.co.uk](https://www.choosehowyoumove.co.uk)

## Cycling

There are signed **National Cycle Network Routes** to and from the city centre. You can find your cycling route and maps at [choosehowyoumove.co.uk](https://www.choosehowyoumove.co.uk)

Cycle racks are provided on most city centre streets, within **Highcross** shopping centre and the **Cultural Quarter**. Secure bicycle parking is available at the **Bike Park** in Town Hall Square and at the railway station.

**Santander Cycles Leicester** is a e-bike share scheme operating in the city, offering a quick, easy and healthy way to get around the city for work or leisure. Pay as you go, monthly and annual plans are available. Visit [rideonleicester.com](https://www.rideonleicester.com) for more details.





## Shopmobility

**Shopmobility** is a free loan service providing scooters, powerchairs and wheelchairs, available to anyone who struggles to walk around the city centre. You will need to join to use the service. Membership is free – please telephone for details.

Highcross Shopmobility:  
Open Monday, Tuesday, Thursday, Friday and Saturday, 9.30am–4pm.  
Closed on Wednesdays.

0116 253 2596

Haymarket Shopmobility:  
Open 9.30am–4pm.  
Pre-booking is advised to avoid disappointment. Equipment will not be available for loan after 3.30pm to enable cleaning and recharging the equipment.

0116 253 7125

## Car Parks

Follow the car park zone signs to find a space at one of the city's many car parks. There are over 8,500 spaces in the city centre car parks all located within close proximity to the wide range of venues and attractions. For more information and a map showing locations of car parks, go to [leicester.gov.uk/parking](https://leicester.gov.uk/parking)



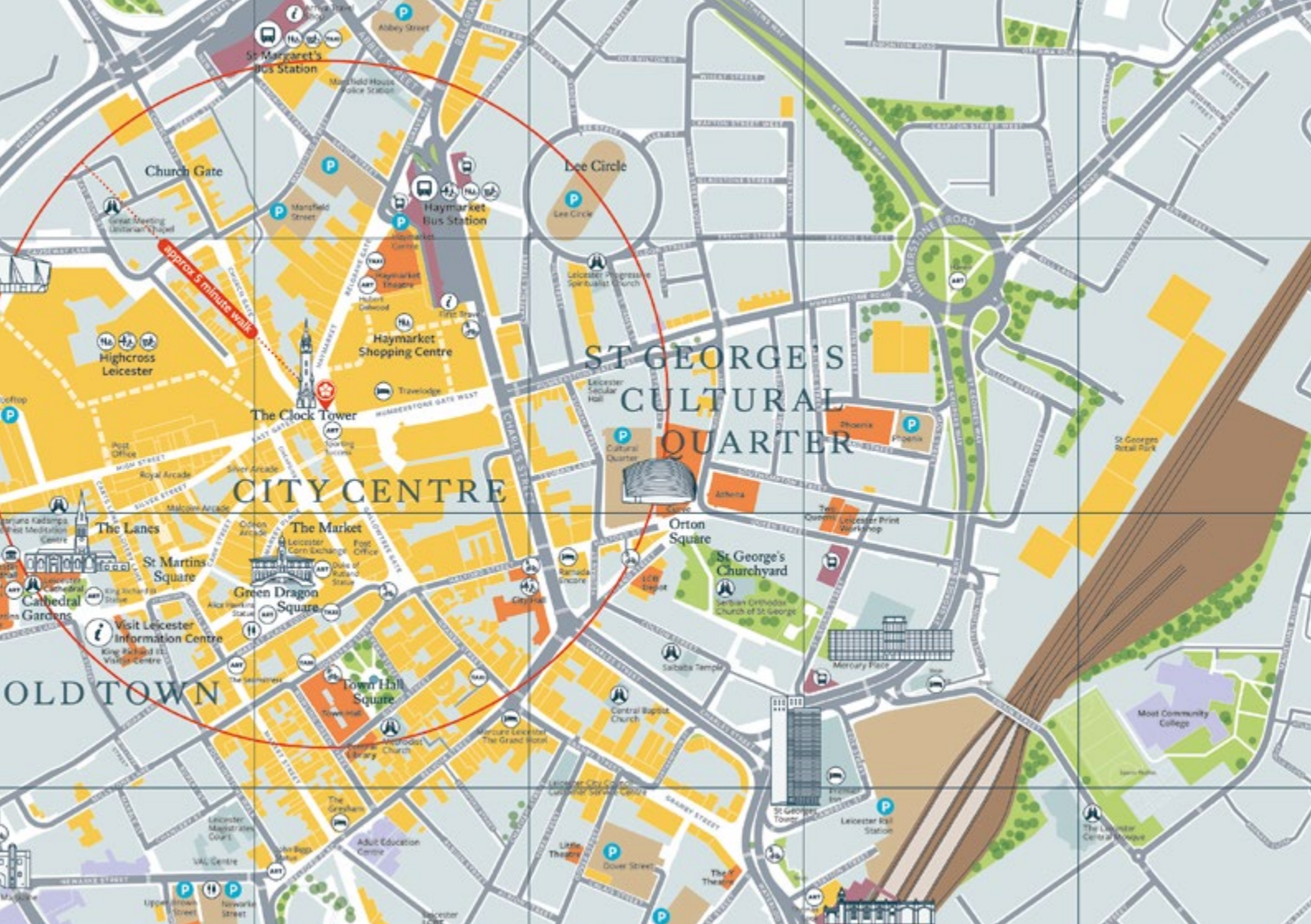




MAKE A DATE  
WITH LEICESTER

## Map of Leicester City Centre





# ST GEORGE'S CULTURAL QUARTER

## CITY CENTRE

## OLD TOWN

approx 5 minute walk

The Clock Tower

Green Dragon Square

Town Hall Square

Lee Circle

Haymarket Bus Station

Haymarket Shopping Centre

Orton Square

St George's Churchyard

Church Gate

The Market

St Martins Square

Visit Leicester Information Centre

St George's Cathedral

St George's Church

St George's Tower

St George's Central Mosque

St George's Central Mosque

The Market

Green Dragon Square

Visit Leicester Information Centre

St George's Cathedral

St George's Church

St George's Tower

St George's Central Mosque

St George's Central Mosque

Haymarket Bus Station

Haymarket Shopping Centre

Travodge

Leicester Progressive Spiritualist Church

Leicester Secular Hall

Cultural Quarter

Orton Square

St George's Churchyard

St George's Church

St George's Tower

St George's Central Mosque

St George's Central Mosque

St George's Central Mosque

Lee Circle

Haymarket Bus Station

Haymarket Theatre

Haymarket Cinema

Haymarket Arcade

Haymarket Square

Haymarket Street

Haymarket Gate West

Haymarket Gate East

Haymarket Gate South

Haymarket Gate North

Haymarket Gate West

Haymarket Gate East

Haymarket Gate South

Haymarket Gate North

Orton Square

St George's Churchyard

St George's Church

St George's Tower

St George's Central Mosque

St George's Central Mosque

St George's Central Mosque

St George's Central Mosque

St George's Churchyard

St George's Church

St George's Tower

St George's Central Mosque

St George's Central Mosque

St George's Central Mosque

St George's Central Mosque

St George's Central Mosque

St George's Royal Park

Most Community College

St George's Central Mosque

St George's Central Mosque

St George's Central Mosque

Church Gate

Haymarket Bus Station

Haymarket Theatre

Haymarket Cinema

Haymarket Arcade

Haymarket Square

Haymarket Street

Haymarket Gate West

Haymarket Gate East

Haymarket Gate South

Haymarket Gate North

Haymarket Gate West

Haymarket Gate East

Haymarket Gate South

Haymarket Gate North

The Market

Green Dragon Square

Visit Leicester Information Centre

St George's Cathedral

St George's Church

St George's Tower

St George's Central Mosque

St George's Central Mosque

Haymarket Bus Station

Haymarket Shopping Centre

Travodge

Leicester Progressive Spiritualist Church

Leicester Secular Hall

Cultural Quarter

Orton Square

St George's Churchyard

St George's Church

St George's Tower

St George's Central Mosque

St George's Central Mosque

St George's Central Mosque

Lee Circle

Haymarket Bus Station

Haymarket Theatre

Haymarket Cinema

Haymarket Arcade

Haymarket Square

Haymarket Street

Haymarket Gate West

Haymarket Gate East

Haymarket Gate South

Haymarket Gate North

Haymarket Gate West

Haymarket Gate East

Haymarket Gate South

Haymarket Gate North

Orton Square

St George's Churchyard

St George's Church

St George's Tower

St George's Central Mosque

St George's Central Mosque

St George's Central Mosque

St George's Central Mosque

St George's Churchyard

St George's Church

St George's Tower

St George's Central Mosque

St George's Central Mosque

St George's Central Mosque

St George's Central Mosque

St George's Central Mosque

St George's Royal Park

Most Community College

St George's Central Mosque

St George's Central Mosque

St George's Central Mosque

Church Gate

Haymarket Bus Station

Haymarket Theatre

Haymarket Cinema

Haymarket Arcade

Haymarket Square

Haymarket Street

Haymarket Gate West

Haymarket Gate East

Haymarket Gate South

Haymarket Gate North

Haymarket Gate West

Haymarket Gate East

Haymarket Gate South

Haymarket Gate North

The Market

Green Dragon Square

Visit Leicester Information Centre

St George's Cathedral

St George's Church

St George's Tower

St George's Central Mosque

St George's Central Mosque

Haymarket Bus Station

Haymarket Shopping Centre

Travodge

Leicester Progressive Spiritualist Church

Leicester Secular Hall

Cultural Quarter

Orton Square

St George's Churchyard

St George's Church

St George's Tower

St George's Central Mosque

St George's Central Mosque

St George's Central Mosque

Lee Circle

Haymarket Bus Station

Haymarket Theatre

Haymarket Cinema

Haymarket Arcade

Haymarket Square

Haymarket Street

Haymarket Gate West

Haymarket Gate East

Haymarket Gate South

Haymarket Gate North

Haymarket Gate West

Haymarket Gate East

Haymarket Gate South

Haymarket Gate North

Orton Square

St George's Churchyard

St George's Church

St George's Tower

St George's Central Mosque

St George's Central Mosque

St George's Central Mosque

St George's Central Mosque

St George's Churchyard

St George's Church

St George's Tower

St George's Central Mosque

St George's Central Mosque

St George's Central Mosque

St George's Central Mosque

St George's Central Mosque

St George's Royal Park

Most Community College

St George's Central Mosque

St George's Central Mosque

St George's Central Mosque

Church Gate

Haymarket Bus Station

Haymarket Theatre

Haymarket Cinema

Haymarket Arcade

Haymarket Square

Haymarket Street

Haymarket Gate West

Haymarket Gate East

Haymarket Gate South

Haymarket Gate North

Haymarket Gate West

Haymarket Gate East

Haymarket Gate South

Haymarket Gate North

The Market

Green Dragon Square

Visit Leicester Information Centre

St George's Cathedral

St George's Church

St George's Tower

St George's Central Mosque

St George's Central Mosque

Haymarket Bus Station

Haymarket Shopping Centre

Travodge

Leicester Progressive Spiritualist Church

Leicester Secular Hall

Cultural Quarter

Orton Square

St George's Churchyard

St George's Church

St George's Tower

St George's Central Mosque

St George's Central Mosque

St George's Central Mosque

Lee Circle

Haymarket Bus Station

Haymarket Theatre

Haymarket Cinema

Haymarket Arcade

Haymarket Square

Haymarket Street

Haymarket Gate West

Haymarket Gate East

Haymarket Gate South

Haymarket Gate North

Haymarket Gate West

Haymarket Gate East

Haymarket Gate South

Haymarket Gate North

Orton Square

St George's Churchyard

St George's Church

St George's Tower

St George's Central Mosque

St George's Central Mosque

St George's Central Mosque

St George's Central Mosque

St George's Churchyard

St George's Church

St George's Tower

St George's Central Mosque

St George's Central Mosque

St George's Central Mosque

St George's Central Mosque

St George's Central Mosque

St George's Royal Park

Most Community College

St George's Central Mosque

St George's Central Mosque

St George's Central Mosque

Church Gate

Haymarket Bus Station

Haymarket Theatre

Haymarket Cinema

Haymarket Arcade

Haymarket Square

Haymarket Street

Haymarket Gate West

Haymarket Gate East

Haymarket Gate South

Haymarket Gate North

Haymarket Gate West

Haymarket Gate East

Haymarket Gate South

Haymarket Gate North

The Market

Green Dragon Square

Visit Leicester Information Centre

St George's Cathedral

St George's Church

St George's Tower

St George's Central Mosque

St George's Central Mosque

Haymarket Bus Station

Haymarket Shopping Centre

Travodge

Leicester Progressive Spiritualist Church

Leicester Secular Hall

Cultural Quarter

Orton Square

St George's Churchyard

St George's Church

St George's Tower



Out and about in the city centre? Visit [thisisleicestermap.co.uk](http://thisisleicestermap.co.uk) to find an interactive map of the city's cafés, restaurants, shops, activities and more.



Find a directory of city centre independents at [independentleicester.co.uk](http://independentleicester.co.uk) or look out for the Independent Leicester yellow sticker when you're out and about.



Save money when you shop local with the **Loyal Free** app. Discover exclusive deals, fun events and interactive trails. Download free from your app store.



Give the gift of choice with The Leicester Gift Card — redeemable at over 150 businesses in the city centre. Buy at Visit Leicester or online at [theleicestergiftcard.com](http://theleicestergiftcard.com)



## Visit Leicester Information Centre

**Our friendly staff are on-hand to ensure you make the most of your time in the city. Stop by for a chat and get information on:**

- Attractions
- Accommodation
- Events and day trips
- Maps
- Travel
- Souvenirs
- Venue finding service for conferences and events

Find out what to see and do at [visitleicester.info](http://visitleicester.info), where you can also sign up to the Visit Leicester e-newsletter.



Image: © Ranjit Singh Chaggar

The Visit Leicester Information Centre is located inside the King Richard III Visitor Centre at 4A St Martins, Leicester, LE1 5DB

### Opening hours:

Monday – Friday 10:00–16:00

Saturday 10:00–17:00

Sunday 10:00–16:00

T: +44 (0)116 299 4444

### visitleicester.info

Find travel advice for Leicester and Leicestershire at [choosehowyoumove.co.uk](http://choosehowyoumove.co.uk)



@visitleicester



@visit\_leicester



@visitleicester

All information is correct at time of printing and is subject to change without notice.



HM Government



European Union  
European Regional  
Development Fund